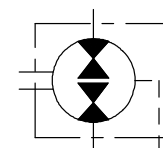
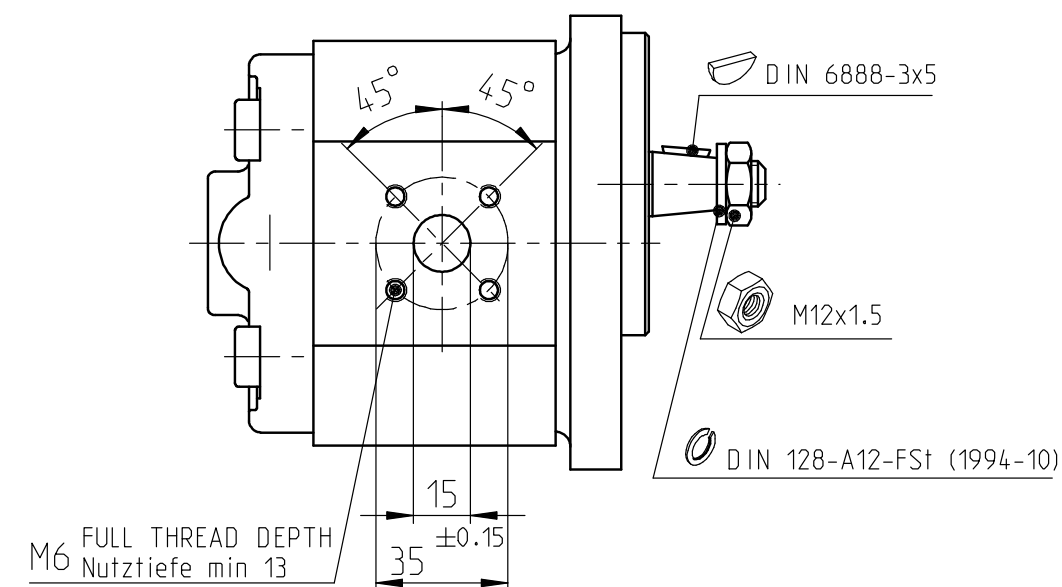
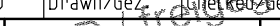



© This document, as well as the data, specifications and other information set forth in it, are the exclusive property of Bosch Rexroth AG. It may not be reproduced or given to third parties without its consent.



AF	--	20160211	PJU6K0R	hja4kor	len2si	7930	DC-MA/EPE	51 MAEPE 1094	
AA	--	20090909	kae9nue			7930	DC-MA/EPE	erstellt	
Inf./Change/Aend.		YYYYMMDD	Drawn/Gew.	Released/Freeig.	BWN	Resp. dept./Verantw. Abt.		Instell./Zus. Info.	
Lang./Spr.	Syst.	Wght./Gew.	<div><b>Rexroth Bosch Group</b></div>						Sheet/Bl.
EN/DE	PE								1/1
		Scale/M. Stab							
MNR		1:2	OFFER DRAWING ANGEBOTSZEICHN.				DP/TO	Ind.	Format
			Repl. for				001	AF	A2
			Repl. by				RA56516139		

Betriebsbedingungen siehe Y 511 200 028  
Alle Anschlüsse für Transport und Lagerung staubdicht  
verschlossen, z.B. mit Kunststoffstopfen

WORKING CONDITIONS SEE Y 511 200 028

ALL OIL PORTS CLOSED PROPERLY AGAINST DUST FOR TRANSPORT AND STORAGE, E.G. WITH PLASTIC CLOSURE CAPS.

general tolerances for/Allgemeintoleranzen fuer		
lin.dim./L.masse	radii/Radien	angles/Winkel
±0.3	-	±1°
all linear dimensions in/ Alle Laengnenmasse in		mm
drawing standard/ Zeichnungsstandard	ISO Standard	
hist. document no. / Hist. Dokumentnr. 10-5811240673		

MA/EPE	51 MAEPE 1094		
MA/EPE	erstellt		
dept./Verantw. Abt.	Add. info./Zus. Info.		
			Sheet/Bt. 1/1
139		DP/TD 001	Ind. AF
Repl. by		Format A2	