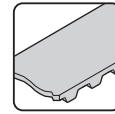


Belt section BS 2



- ▶ Ready for operation conveyor section with own drive
- ▶ Accumulation operation possible
- ▶ Conveyor medium: Toothed belt (suitable for use in an EPA)
- ▶ Reversible operation possible
- ▶ Drive side can be attached to the input of KE 2/O (not as cam drive)
- ▶ When mounted at the output of a curve, BS 2 can also serve as a cam drive. The required connection kit and drive set is contained in the scope of delivery of the curve
- ▶ Suitable for mounting between KE 2 and linear section LS 2
- ▶ BS 2 is suitable and recommended for workpiece pallets WT 2 and WT 2/LS in the longitudinal conveyor
- ▶ Can be combined with WT 2, WT 2/E, WT 2/LS and WT 2/F with wear pad PA
- ▶ Motor mounting right, left or central
- ▶ Motor connection: Optionally with cable/plug or terminal box
- ▶ Special models on request

The belt section is a ready for operation conveyor section with own drive for the transportation of workpiece pallets in the longitudinal direction or for the transverse conveying of the workpiece pallet between parallel conveyor sections in connection with two lift transverse units HQ 2.

Recommended accessories

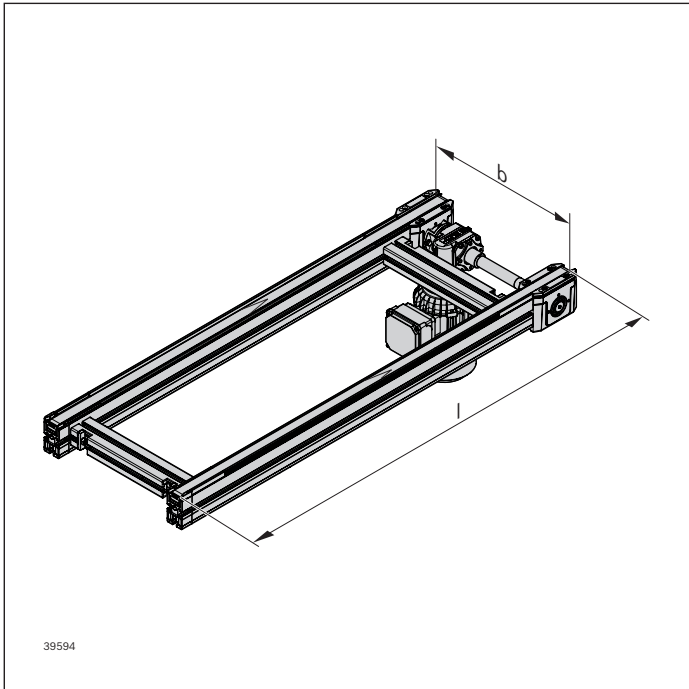
- ▶ Connection kit
- ▶ Leg sets SZ 2/...

Condition on delivery

- ▶ Assembled

Notice: Positioning of WTs in the area of the drive heads/return heads is not permitted.

Ordering information



Material number		3842999716
b (mm)	Track width in direction of transport	160; 240; 320; 400; 480; 640; 800; 1040; 1200 160 ... 1200 ¹⁾
l (mm)	Length	240 ... 6000 ²⁾
v_N (m/min)	Nominal speed	0 ³⁾ ; 6; 9; 12; 15; 18
AT	Motor connection S = cable/plug K = terminal box	S; K
MA	Motor mounting R = right L = left M = center	R; L; M ⁴⁾

¹⁾ Individual width variants can be ordered

²⁾ l is rounded in accordance with the toothed belt pitch

³⁾ $v_N = 0$: without motor or gear

⁴⁾ When MA = M and b = 160 mm, the max. section load is only 30 kg

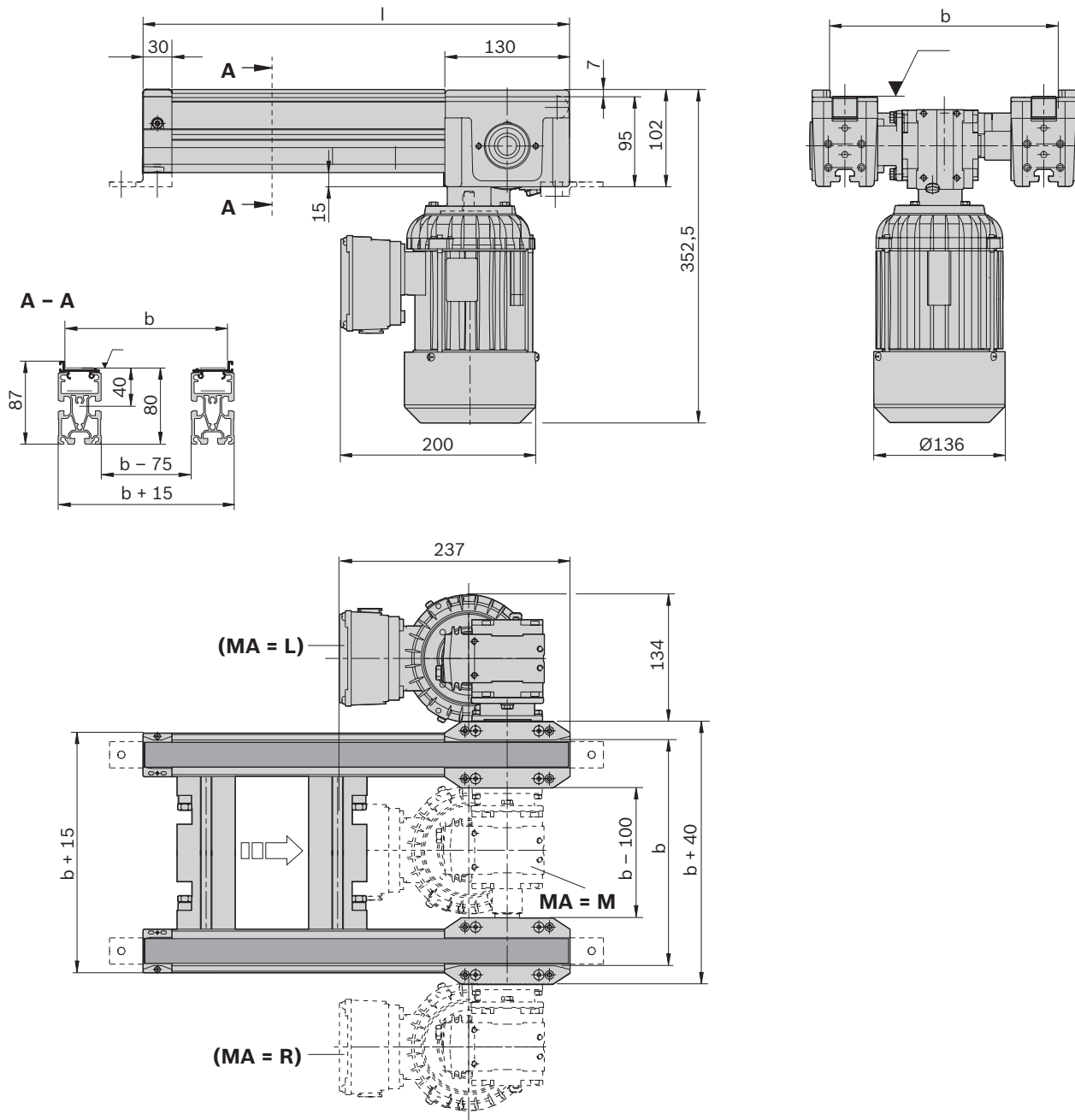
Technical data

Material number		3842999716
Max. section load in accumulation operation	kg	60 ⁵⁾
ESD		ja
Cleanroom class		ISO-Klasse 7 ⁶⁾
Dry room	rF	%
		<1
Material specification		Gleitprofil: PA Führungsprofil: PA Streckenprofil: Aluminium natur; eloxiert
Length	l	mm
		240 ... 6000

⁵⁾ When MA = M and b = 160 mm, the max. section load is only 30 kg

⁶⁾ Is basically suitable

Dimensions



37544

The data specified above only serves to describe the product. Due to the continuing development of our products, no statements concerning a certain condition or suitability for a certain application can be derived from our information. The information given does not exempt the user from the obligation of own judgment and verification. It must be remembered that our products are subject to a natural process of wear and aging.