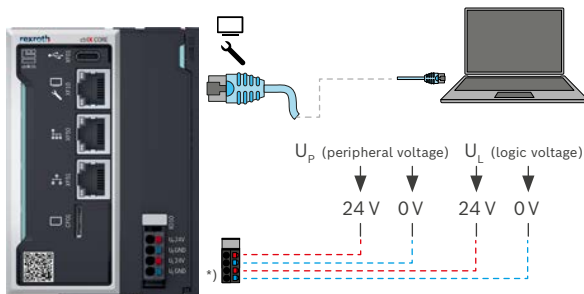


Quick Start Guide ctrlX CORE

1 CONNECT THE DEVICE

Connect the power supply unit to the XD10 connection point. Use the Ethernet cable to connect the XF10 engineering interface to your computer.



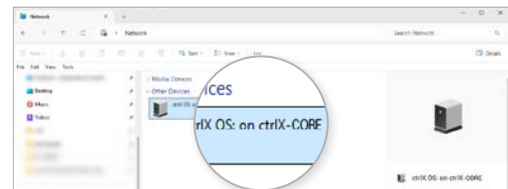
*) with ctrlX CORE X3: connect only UL (logic voltage)
Further ctrlX CORE variants are described in the online documentation.

2 OPEN NETWORK SETTINGS

Double-click on the control symbol or enter the IP address (<https://192.168.1.1>) in your browser to open the web interface. Change of network settings may be required.

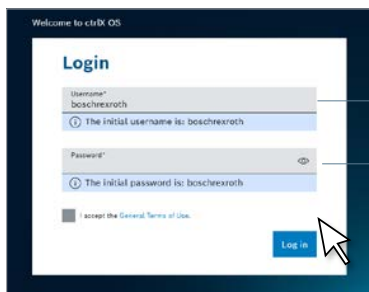
Your web browser indicates an unknown certificate. Show the entire message dialog and click on "proceed" or "go on to webpage".

Notice: In case of problems, request permission to change network settings or check IT security restrictions with your system administrator.



3 LOG IN

Log in with the initial access data and accept the terms of use.

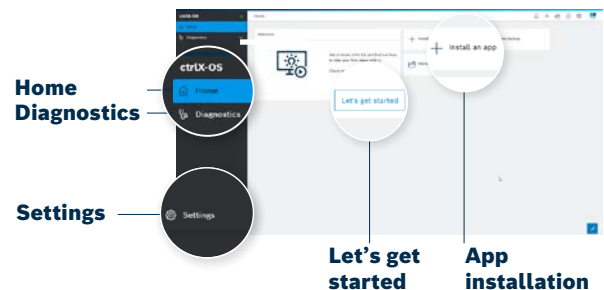


Username:
boschrexroth

Password:
boschrexroth

4 WELCOME TO THE ENGINEERING AREA

Configure and individualize your ctrlX CORE in the web-based engineering.



PORTFOLIO

Scalable industrial control system



Required components for first steps:

- Control hardware
- Engineering PC
- 24 V supply
- Ethernet cable

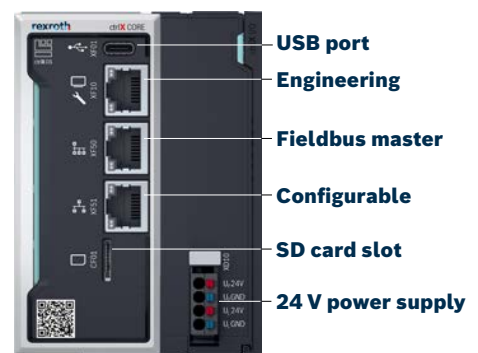
INTERFACES

LED
light pipe

Error

Boot/
Engineering

Ready



ctrlX COREplus X3

More information: [ctrlX AUTOMATION website](#) [ctrlX OS Store](#) [How to](#) [Online documentation](#)