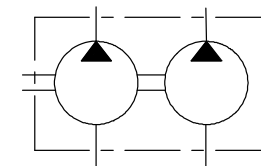


ALL OIL PORTS CLOSED PROPERLY AGAINST DUST FOR TRANSPORT AND STORAGE, E.G. WITH PLASTIC CLOSURE CAPS.



|   |              |               |
|---|--------------|---------------|
| general tolerances for/ALLgemeintoleranzen fuer   |              |               |
| lin.dim./L.masse                                  | radii/Radien | angles/Winkel |
| ±0.3  | --           | ±1            |
| all linear dimensions in/<br>Alle Laengenmasse in |              | mm            |
| drawing standard/<br>Zeichnungsstandard           | ISO Standard |               |
| hist. document no./<br>Hist. Dokumentnr.          | A510845275   |               |
| A-document/<br>A-Dokument                         | RA61943102   |               |
|   |              |               |

|                             |               |                                  |                     |              |     |   |                                |                                       |            |                  |       |             |
|-----------------------------|---------------|----------------------------------|---------------------|--------------|-----|---|--------------------------------|---------------------------------------|------------|------------------|-------|-------------|
| B 510 845 287               | 0 510 765 350 | ...-11-022/019 LFX 2020 KB-S0259 | Links/CCW           | 22.5         | 19  | 2500                                    | 210                            | 190                                   | 56.1       | 160.6            | 221.1 | Viton-WDR   |
| B 510 845 283               | 0 510 765 351 | ...-11-022/016 LFX 2020 KB-S0259 | Links/CCW           | 22.5         | 16  | 2500                                    | 210                            | 210                                   | 56.1       | 160.6            | 215.7 | Viton-WDR   |
| B 510 845 276               | .             | .                                | Links/CCW           | 22.5         | 14  | 2500                                    | 210                            | 210                                   | 56.1       | 160.6            | 212.7 | Viton-WDR   |
| B 510 845 280               | .             | .                                | Links/CCW           | 22.5         | 11  | 2500                                    | 210                            | 210                                   | 56.1       | 160.1            | 207.7 | Viton-WDR   |
| B 510 845 275               | .             | .                                | Links/CCW           | 19           | 14  | 3000                                    | 210                            | 210                                   | 48.5       | 155.2            | 207.3 | Viton-WDR   |
| B 510 845 279               | 0 510 665 432 | ...-11-019/008 LFX 2020 KB-S0259 | Links/CCW           | 19           | 8   | 3000                                    | 210                            | 210                                   | 48.5       | 150.9            | 196.9 | Viton-WDR   |
| Entwurfs-<br>Zeichnungs-Nr. | Bestell-Nr.   | AZPFF-...<br>Typ-Aufschrift      | Dreh-<br>richtung   | PI           | PII | max.<br>Volumen<br>[cm <sup>3</sup> /U] | PI<br>max. Drehzahl<br>[U/min] | PII<br>Druck<br>(intermitt.)<br>[bar] | A          | B<br>Maß<br>[mm] | C     | Bemerkungen |
| DRAWING                     | PART NUMBER   | DESIGNATION                      | DIR. OF<br>ROTATION | DISPLACEMENT |     | MAX.<br>SPEED                           | MAX.<br>PRESSURE               |                                       | DIMENSIONS |                  |       | REMARKS     |

[illegible]